

Rockwood is an **operationally-oriented** private equity firm that has been partnering with **entrepreneur or family-owned businesses and corporate divestitures** in the **lower middle market** for **more than 20 years**. Rockwood takes a values-based approach to investing. We strive to do the right thing. Always.

We bring the knowledge of our **Rockwood River Guide®** network and time-tested Rockwood Business Systems to build extraordinary companies with entrepreneurial cultures.

## Investment Criteria



**Target Company Size**  
 \$10-\$75 million in revenue  
 \$2-\$7 million of EBITDA  
 Add-ons of any size



**Geography**  
 Platforms: North America HQ  
 Add-ons: Any location worldwide



**Ownership Structure**  
 Family/entrepreneur-owned  
 Corporate carve-outs

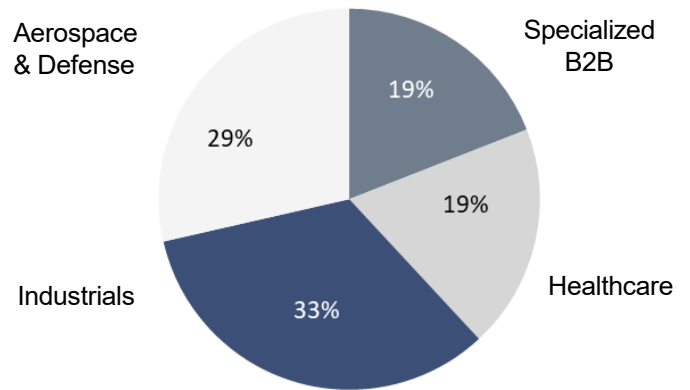


**Transaction Types**  
 Family/entrepreneur-owned  
 Recapitalizations or buyouts  
 Corporate carve-outs or divestitures  
 Management buy-outs or buy-ins  
 Succession planning partnerships  
 Flexible Capital Solutions

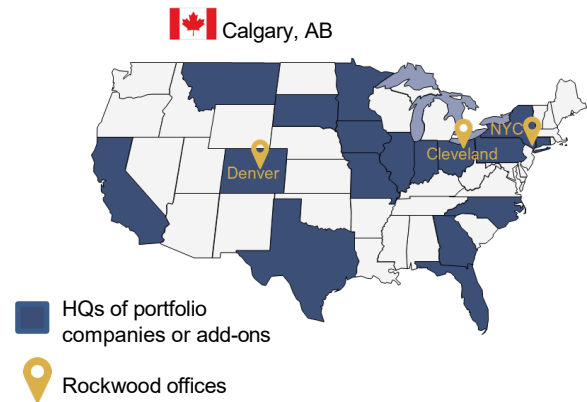


**Focus Sectors and Themes**  
 Regulated Industries  
 Aerospace & Defense  
 Environmental  
 Healthcare  
 Industrials  
 Specialized B2B

## Portfolio Investments by Sector



## North American Headquartered



## Company Founders and Leadership on Partnering with Rockwood

“A partnership with Rockwood is a perfect strategic fit for SYNEO...We are particularly excited about partnering with Rockwood’s River Guide network to open new doors and accelerate our growth in the coming years.”

Tyler Wackman, SYNEO CEO

“Welcoming Rockwood as a partner is especially gratifying for me. I first met Brett Keith, Rockwood’s co-founder and Managing Partner, about 25 years ago when his father, Ron, and I were partners in a very successful pharmacy venture. Ron’s keen business savvy, strategic vision and values are ‘inter-generational’ and clearly reflected in Rockwood’s personnel and culture. We are delighted to be joining the Rockwood family.”

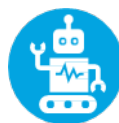
Tim Burfield, Lifeway Mobility Chairman

“We need the right partners to help us take the company to the next level. Teaming with Rockwood...allows our founding management group to hit the ground running and execute the strategic plan we have developed together.”

Todd Tholkes, Founding Family Member and CEO of Altimate Medical

## Investment Expertise and Focus by Sector

Click [here](#) for our current focus areas for portfolio add-ons



Industrials



Aerospace & Defense



Healthcare



Specialized B2B

### Aerospace & Defense

#### Select Prior Investments



Astrex Electronics (Plainview, NY)  
Value-added distributor of electronic connectors & accessories



BJG Electronics (Ronkonkoma, NY)  
Value-added distributor & manufacturer of electro-mechanical products



HDT Global (Solon, OH)  
Manufacturer of rugged and durable products for expeditionary applications



Space Electronics (Berlin, CT)  
Manufacturer of mass properties measurement instruments and electronic test solutions

### Industrials

#### Current Investments



NG Companies (Longmont, CO)  
Provider of underground damage prevention solutions, such as hydrovac and utility locating services, to infrastructure, utility, telecom, and transportation markets  
Initial investment: 2023



Dynamic Facility Services (Cleveland, OH),  
Provider of repair & replacement services for commercial doors, dock equipment, gates, & access control systems  
Add-ons completed: 2  
Initial investment: 2022



Clean Water Environmental Services (Denver, CO)  
Stormwater management and soil erosion control environmental solutions provider  
Add-ons completed: 1  
Initial investment: 2021

#### Select Prior Investments



Impact Environmental Group (Elgin, IL)  
Provider of products and services to the global waste and recycling industry



DeZurik (Sartell, MN)  
Manufacturer of water & wastewater valves and controls

### Healthcare

#### Current Investments



Lifeway Mobility (Hartford, CT)  
Provider of home accessibility and safety solutions, including wheelchair ramps and stair lifts, for people with mobility challenges or who wish to age-in-place

#### Select Prior Investments



SYNEO (West Palm Beach, FL)  
Provider of automation equipment, tools & contract manufacturing services for the interventional medical device industry, specifically catheter manufacturing

#### AltimateMedical

Altimate Medical (Morton, MN)  
Manufacturer of standing solutions to support therapy for adults and children with disabilities



Medical Positioning, Inc. (Kansas City, MO)  
Manufacturer of patented specialty beds and tables designed to improve diagnostic imaging procedures

### Specialized B2B

#### Current Investments



Superior Office Solutions (New York, NY)  
Office equipment and services dealer and provider of related branded products  
Add-ons completed: 2  
Initial investment: 2019

#### Select Prior Investments



AFC Holdings (Fairfield, OH)  
Value-added distributor of fasteners & industrial components



Asset Recovery Corp. (St. Paul, MN)  
Provider of electronics recycling services & end-of-life solutions

Contact:

Kate Faust

Partner-Business Development  
(216) 278-7070

[kfaust@rockwoodequity.com](mailto:kfaust@rockwoodequity.com)